

CERTIFICATE OF LOCATION OF GOVERNMENT CORNER

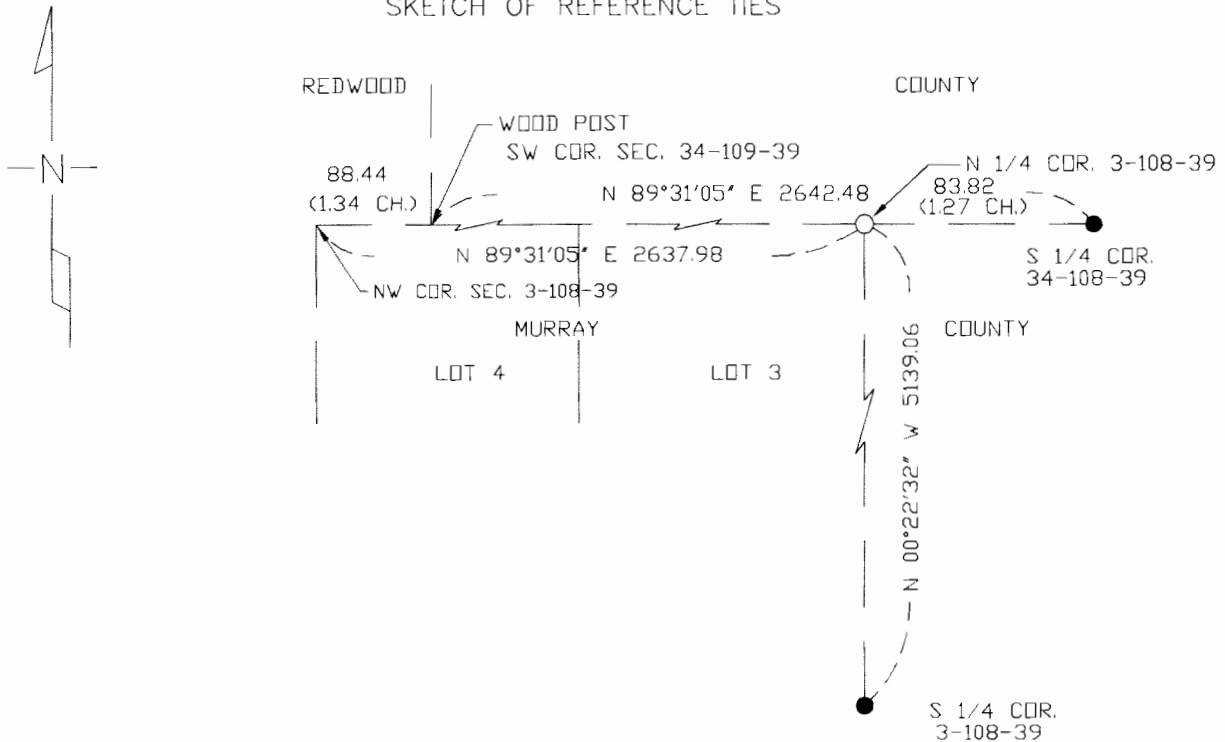
NORTH 1/4 Corner of Section 3, Township 108 N, Range 39 W, 5th P.M.
 STATE OF MINNESOTA, County of MURRAY

At the corner location shown on the sketch

- On 6-9-05 found nothing. Location is in road ditch, a cut area where monument was probably removed during road construction.
 - left monument as found
 - lowered monument,
 - removed monument (explain)

- On 6-16-05 placed a 1" Iron Pipe with survey cap 23008 at calculated position from other monuments and from GLO field notes.

SKETCH OF REFERENCE TIES



Statement of evidence relative to this corner location is on back of page.

I hereby certify that this document and the data contained herein was prepared by me or under my direct supervision.

Perry L. Zieske 6-20-05
 SIGNATURE DATE

MN. REGISTRATION NO. 23008

- Land Surveyor, Professional Engineer
- County Surveyor, County Engineer

OFFICE OF THE COUNTY RECORDER

I hereby certify that this document was filed in the Co. Recorder's Office at _____ on the

_____ day of JUN 21 2005

County Recorder _____
 By James V. Johnson, Deputy

DOCUMENT NO. _____